

The pond of 'Chaume'...

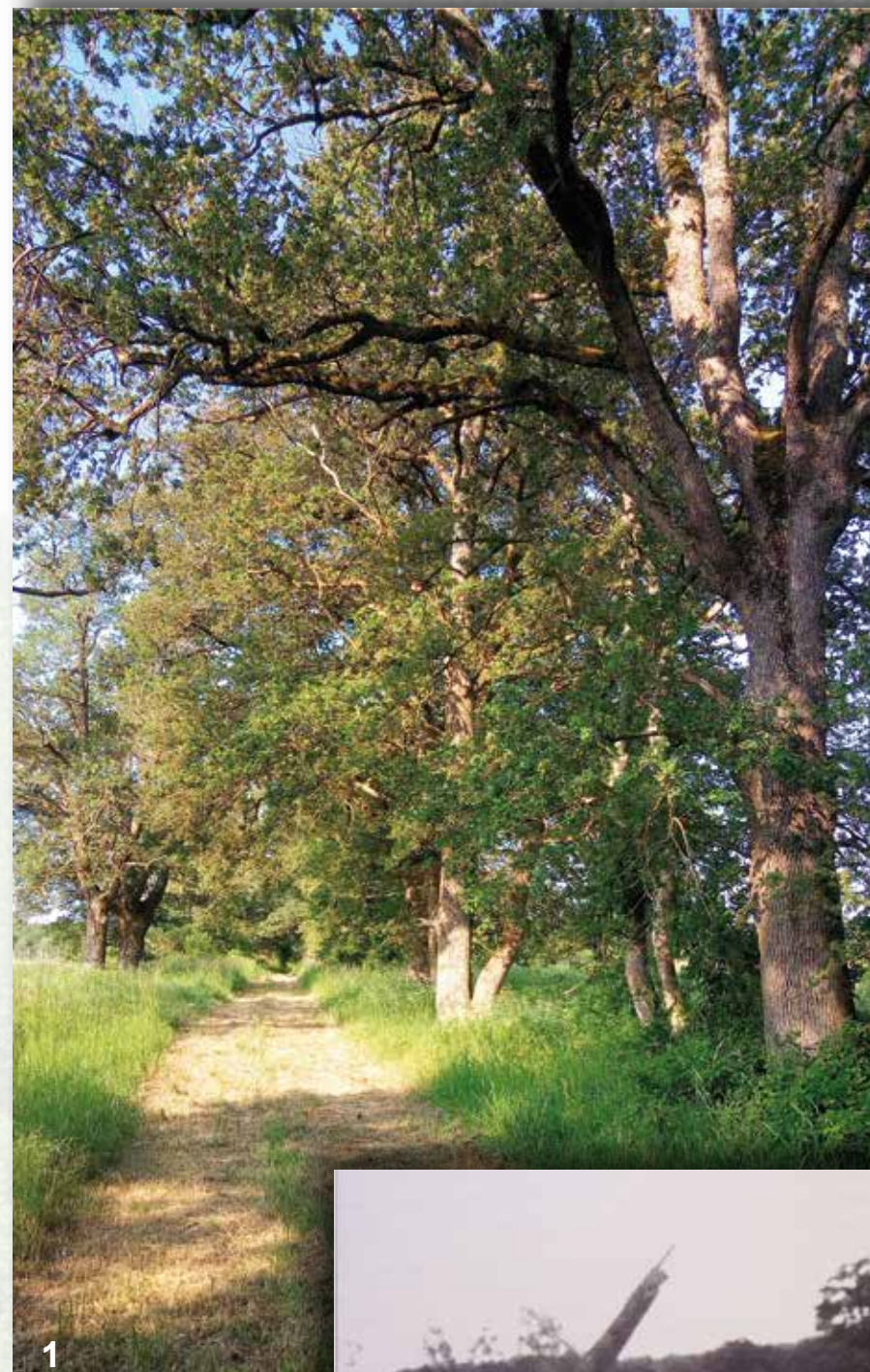
3

...between nature and history

The path crosses a diversified natural environment with woods, cultivated fields, fallows, small ponds, valorized in hunting courses, populated with big game.

Persac is a hotspot in the history of wolf hunting. Up until the end of the 19th century the castles' owners of Brûlonnière and Oranville allowed the wolf's eradication selecting a robust breed of dog of venery, the Bastards of Haut-Poitou.

In 1944, an American bomber crashed into the pond of Chaume, a memorial is visible nearby.



1



2

2. The pond of 'Chaume'

The sandy and clayey plateau was formerly a grove, with extensive agriculture. Hedges remain with beautiful trees but the landscape closes with the extension of fallow, despite the cultivation of some plots for game feeding.

1. View of the path towards the pond of 'Chaume'



4

3. et 4. On July 4th, 1944, the crash of an American bomber at the pond of Chaume did seven victims. Two members of the crew survive, they are hidden and cared for in Persac and Plaisance by the Resistance. To lure the Germans, one of them is supposed to be drowned in the pond, the second is buried in the cemetery, but the coffin was filled with stones.



3



5

In the 19th century, the owner of the castle of Brûlonnière, Viscount Emile de la Besge, known in the region as a great wolf hunter, was the creator of a breed of dogs for this hunt.

5. Poitevin Bastards of Rallie Persac -1863- Donated to the Society of Venery. Private collection

The dog was domesticated by hunters around 12000 BC.
With? 1. Wild dogs 2. Domesticated wolves



2. Domesticated wolves, because these animals hunted the same game as men and had common interests.

